



imagine workgroup laser MFPs
that work as hard as you do.

SCX-6322DN/SCX-6122FN Mono Laser MFPs



Components



1. DADF/ADF (Duplex Automatic Document Feeder/Automatic Document Feeder)

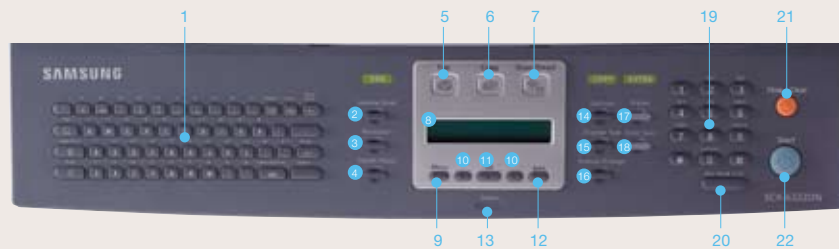
2. Document Width Guides
3. Document Input Tray
4. Document Output Tray

5. Control Panel
6. Multi-Purpose Tray
7. Front Cover
8. Release Lever
9. Scanner Lid
10. Tray 1
11. Optional Tray

12. Output Support
13. Power Switch
14. Power Receptacle
15. Extension Telephone Socket (EXT)
16. Telephone Line Socket (LINE)

17. Parallel Port
18. USB Port
19. Network Port
20. ADF Connector

Control Panel



1. Keyboard
2. Address Book
3. Resolution
4. Redial/Pause
5. Fax Mode
6. Copy Mode

7. Scan/Email
8. Display
9. Menu
10. Scroll Buttons
11. OK
12. Back

13. Machine Status
14. Contrast Control
15. Original Copy Type
16. Reduce/Enlarge
17. Duplex Copy
18. Toner Save Mode

19. Number Keypad
20. On Hook Dial
21. Stop/Clear
22. Start

Samsung SCX-6322DN/SCX-6122FN

Digital duplex copier, laser printer, color scanner and high-speed fax machine.

The fastest print and copy speeds in their class. Simple network integration. Automatic duplexing. 20,000 page per month duty cycles. The SCX-6322DN/SCX-6122FN MFPs are ready to work. Combining four business machines into space-saving, efficient productivity centers, Samsung MFPs are more than the sum of their parts. With innovative features that let you do more than you ever have before, you can work better. Work more efficiently. Work smarter. With the Samsung SCX-6322DN/SCX-6122FN MFPs, it's not hard to imagine.

They're paper-saving digital duplex copiers.



Standard DADF (Duplex Automatic Document Feeder)

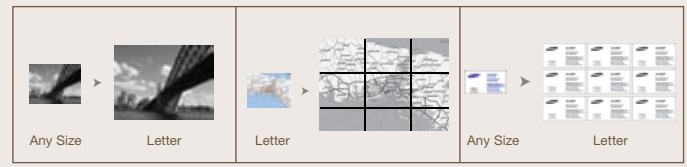
Save paper and create professional duplex (2-sided) documents in 4 copy formats, including 1:1, 1:2, 2:1 and 2:2 with simple one-touch buttons (SCX-6322DN only).

Easy Operation

The intuitively designed backlit operation panel has ergonomic one-touch buttons, a clear LCD display and an Error Indicator for instant job status and more direct control.



ID Card Copy



Auto-Fit Copying

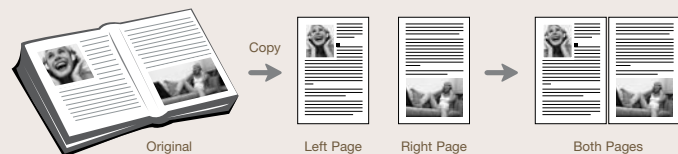
Poster Printer

Clone Copying

Advanced One-Button Copying Get more out of your copier with editing functions like Clone, Auto-Fit, 2-up, Poster and ID Card copy, in addition to 25%~400% Zoom and 999 page Multi-copy.



23 Pages per Minute The fastest copy speeds in their class will make quick work of your largest documents.



Book Copy

Auto Margin Shift and Book Copy

Create a binding edge for the document by shifting the image horizontally or vertically. Then copy an entire book by using Book Copy options like Left Page, Right Page or Both Pages.



Auto Margin Shift

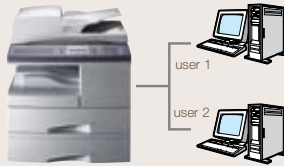
High Volume Paper Capacity The standard 550-sheet paper tray, 100-sheet multi-purpose tray, optional 550-sheet additional tray and output capacity of 250 sheets means you can copy more with less reloading.

They're high-resolution laser printers.

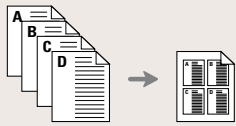
Printouts The superb output of up to 1,200 dpi will have you always looking your sharpest.

23 Pages per Minute With fast printout speeds and high speed USB 2.0 interfaces, you'll never have to wait long.

Network Printing The advanced capabilities of the SCX-6322DN/SCX-6122FN can be shared over a network, to make print management simple for small workgroups.



1,200x1,200 dpi



Multiple Pages per Side



Booklet Printing



Watermark and Overlay



Duplex (2-sided) Printing-Long Edge

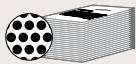


Duplex (2-sided) Printing-Short Edge



Scaling

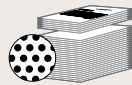
Professional Layouts Print professional-looking documents with Multiple Pages per Side, Scaling, Fit to Page, Poster, Duplex Printing, Booklet Printing, Watermark and Overlay features.



Standard Toner Yield
8,000 sheets

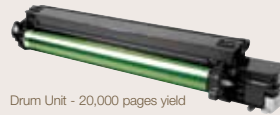


Toner Save



Toner Yield with One-touch Save Function
8,000 sheets + 2,400 sheets

Toner Save Button for up to 30% Savings Just push the one-touch button to reduce toner consumption by up to 30% while still producing high-quality printouts in a slightly lighter tone.



Drum Unit - 20,000 pages yield



Toner Cartridge - 8,000 pages yield

Economic 2-piece Consumables Allows you to maximize the 20,000 page yield drum unit by replacing the 8,000 page yield toner cartridge separately, thereby extending the drum unit's usability.

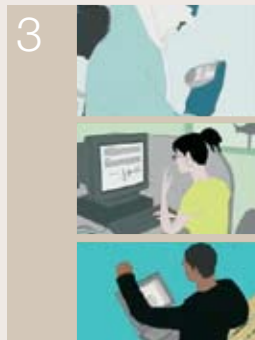
They're scanners for the digital age.



Scan to Email Email documents to anyone in the world directly from your network-connected multi-function printer. For example, members of a Mergers and Acquisition Team might want to share sensitive hard copy reports or news articles. All they have to do is scan the relevant pages with their Samsung MFP, select the address, add a message subject on the full e-mail keypad, and send. Confidentiality is maintained throughout. Supports PDF, JPEG and TIFF file formats.

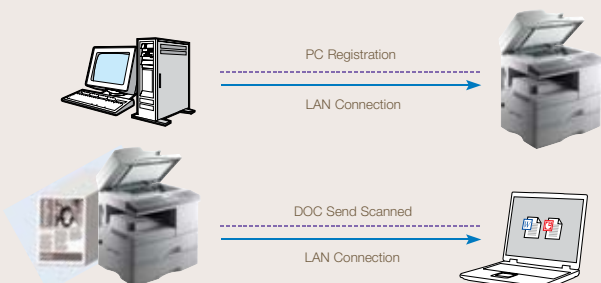


The standard keyboard on the SCX-6322DN and optional network kit enable the direct transfer of scanned images via E-mail.



1. Enter e-mail addresses 2. Scan document 3. Send to multiple e-mail recipients

LDAP Scan Management The LDAP (Lightweight Directory Access Protocol) is a networking protocol for querying and modifying directory services running over TCP/IP. With this feature, you'll always have your most current e-mail address book available for Scan to Email.

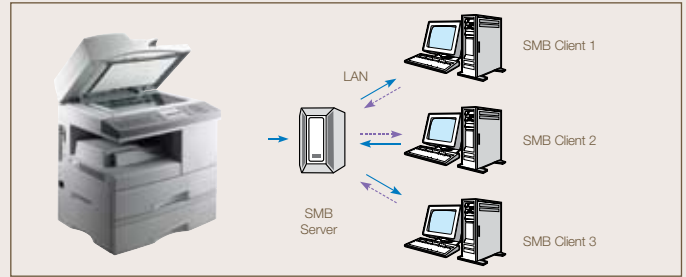


Scan to Network lets you scan documents directly to your network, saving paper and time.

Scan to Network An easy way to capture and store information from hard copy documents. Featuring the same walk-up simplicity of our other scanning solutions, Scan to Network lets you scan directly to your document management applications. Creates PDF, JPEG and TIFF file formats.



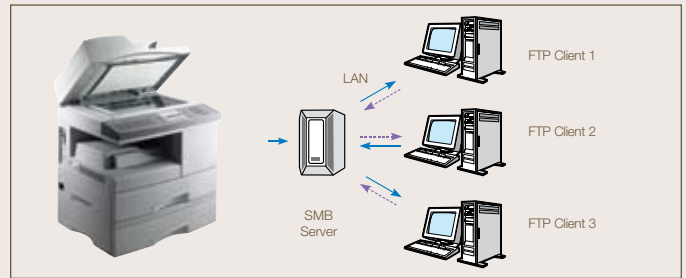
Scan to SMB With the Scan to SMB (Server Message Block) feature, users can store scanned documents directly to a shared folder in the user's PC. Up to 20 destinations can be designated as a shared folder. Scan to SMB is more secure than Scan to FTP because the password is encrypted. It also allows transmission of larger documents than Scan to E-mail, since there is no limitation of document size. Scan to SMB does not require an additional client program, and can be set up to shared folders through SyncThru™ Web Service. Supports Microsoft Windows, TCP/IP and other network protocols.



Scan to SMB securely transmits large quantities of documents directly to up to 20 PCs, even without a server.



Scan to FTP Scan to FTP is an efficient way to digitize and transmit large quantities of documents. Simply scan hardcopy documents, convert them to digital format, and store them in a specified directory on an internal or external FTP server. Scanned data stored on the FTP server can be accessed from an FTP client program installed on the user's PC or a web browser. Scan to FTP is designed especially for larger files and provides a strategic complement to Scan to E-mail. Scan to FTP can handle files of near limitless proportions, and is the perfect tool for archiving larger documents.



Scan to FTP transmits large quantities of documents quickly to up to 20 servers.

They're productivity machines.

SyncThru™ Web Service Printer Management Tool Increase productivity with SyncThru™ Web Service. This user-friendly printer configuration tool requires no installation in the form of an embedded web server that can be accessed by a web browser. It gives administrators the ability to easily change network and individual printer settings, upgrade firmware and view network printer status.



Remote Configuration and Monitoring of Network Printer



Use Popular Web Browsers without Installing Extra Software



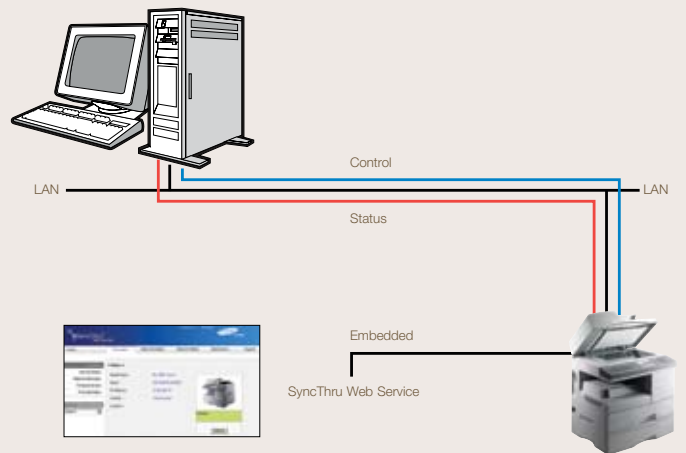
Modification Enabled by Authorized User (Password Protection)



Print Out Configuration Sheet of Network Printer

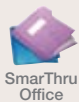


Firmware Upgrade of Printer and Printer Card

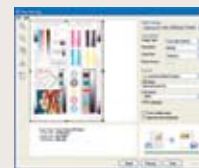


SmarThru™ Office Document Management Software

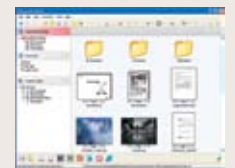
A powerful document management application for Office users. It creates, stores and edits scanned images, and delivers them to each application. It also makes it easy to take advantage of all the features of the SCX-6322DN/SCX-6122FN MFPs, even with complicated networks. SmarThru™ Office also provides network scan as a default, so you don't have to install additional applications. And SmarThru™ client lets users scan documents directly to their PC.



Network Scan View



Local Scan View



SmarThru™ Office Main Page

Specifications

	SCX-6322DN	SCX-6122FN
Functions		
Print/Copy/Scan/Fax	Yes	Yes
Print		
Print Speed	Up to 23 ppm, Duplex up to 13 ipm	Up to 23 ppm, Duplex up to 13 ipm
First Print Out	Less than 12 seconds (from Standby mode)	Less than 12 seconds (from Standby mode)
Print Resolution	Up to 1,200 dpi effective output	Up to 1,200 dpi effective output
Printer Memory	64 MB	64 MB
Print Language	PCL 6, PostScript 3	PCL 6, PostScript 3
Duplex Print	Standard	Standard
Duty Cycle	Up to 20,000 per month, AMPV 4,000 pages	Up to 20,000 per month, AMPV 2,500 pages
Copy		
Copy Speed	Up to 23 cpm	Up to 23 cpm
First Copy Out	Less than 10 seconds	Less than 10 seconds
Copy Resolution (Optical)	Up to 600 x 600 dpi Text, Text/Photo mode: 600 x 300 dpi, Photo mode: 600 x 300 dpi (Platen), 600 x 600 dpi (DADF)	Up to 600 x 600 dpi Text, Text/Photo mode: 600 x 300 dpi, Photo mode: 600 x 300 dpi (Platen), 600 x 600 dpi (ADF)
Reduction and Enlargement	25-400%, ADF 25-100%	25-400%, ADF 25-100%
Multiple Copies	Up to 999 copies	Up to 999 copies
Duplex Copy	Standard (1:2, 2:2) Duplex ADF	Standard (1:2) Simplex ADF
Fax		
Modem Speed, Fax Speed	33.6 Kbps, Approx. 3 sec. per page	33.6 Kbps, Approx. 3 sec. per page
Compression Mode, Compatibility	MH/MR/MMR (ECM Mode)/JBIG/JPEG, ITU-T Group 3	MH/MR/MMR (ECM Mode)/JBIG/JPEG, ITU-T Group 3
Fax Memory	8 MB	8 MB
Fax Resolution	Standard: 203 x 98 dpi, Fine: 203 x 196 dpi, Super Fine: 203 x 391 dpi, 300 x 300 dpi, 406 x 392 dpi	Standard: 203 x 98 dpi, Fine: 203 x 196 dpi, Super Fine: 203 x 391 dpi, 300 x 300 dpi, 406 x 392 dpi
Speed Dial	40 one-touch dial, 240 speed dial	40 one-touch dial, 240 speed dial
Scan		
Scan Resolution (Optical/Enhanced)	Up to 600 dpi/4,800 dpi	Up to 600 dpi/4,800 dpi
Scan Technology	Color CCD	Color CCD
Compatibility	Twain standard, WIA standard	Twain standard, WIA standard
Bit Depth (Text, Grayscale, Color)	1 bit, 8 bit, 24 bit (36 bit internal)	1 bit, 8 bit, 24 bit (36 bit internal)
Scan to Destinations	Email, FTP, SMB, Client	Email, FTP, SMB, Client
Gray Scale	256 Levels	256 Levels
Scan Size (Maximum)	Legal (8.2" x 14" effective scan area)	Legal (8.2" x 14" effective scan area)
Paper Handling		
Max Paper Size	8.5" x 14" legal	8.5" x 14" legal
Paper Input Capacity	550-sheet cassette tray, 100-sheet multipurpose tray	550-sheet cassette tray, 100-sheet multipurpose tray
Paper Output Capacity (Face-Down)	250 sheets	250 sheets
Automatic Document Feeder Capacity	Duplex, 50 sheet, Width: 5.6" - 8.5", Length: 5" - 14"	Simplex, 40 sheet, Width: 6.9" - 8.5", Length: 5" - 14"
Supplies		
Toner	SCX-6320D8, 8,000 pages	SCX-6320D8, 8,000 pages
Drum	SCX-6320R2, 20,000 pages	SCX-6320R2, 20,000 pages
General		
Connectivity, Standard	USB 2.0, 10/100 Base-TX Ethernet, IEEE 1284	USB 2.0, 10/100 Base-TX Ethernet, IEEE 1284
Operating System Compatibility	Windows 98, Me, NT4.0, 2000, XP, Mac 10.3-10.4, Various Linux systems (USB)	Windows 98, Me, NT4.0, 2000, XP, Mac 10.3-10.4, Various Linux systems (USB)
Acoustics (Operating, Standby, Warm Up)	Less than 65 dBA, less than 40 dBA, less than 48 dBA	Less than 65 dBA, less than 40 dBA, less than 48 dBA
Power Requirement	110-127VAC 50.60 Hz, 6.0A or 220-240VAC, 50/60 Hz, 3.5A	110-127VAC 50.60 Hz, 6.0A or 220-240VAC, 50/60 Hz, 3.5A
Power (PowerSave, Standby, Operation)	28 watts, 100 watts, 450 watts	28 watts, 100 watts, 450 watts
Operating Conditions	Temperature: 10°C - 32°C (50°F - 89°F), Humidity: 20% - 80% RH	Temperature: 10°C - 32°C (50°F - 89°F), Humidity: 20% - 80% RH
LCD	2 line x 20 characters	2 line x 20 characters
Warm-up Time	Less than 25 seconds (from sleep mode)	Less than 25 seconds (from sleep mode)
Dimensions (W x D x H)	22.0" x 16.9" x 19.4"	22.0" x 16.9" x 18"
Weight	56.5 lbs.	49.7 lbs.

Options

Options	
Second Cassette	SCX-56122A (550 sheet letter/legal)
Stand	SCX-6320G5, Dimensions (W x D x H) 21.5" x 16" x 22.1"; 35 lbs.

©2007 Samsung Electronics America, Inc. Samsung is a registered trademark of Samsung Electronics Corp., Ltd. Specifications and design are subject to change without notice. See www.samsung.com for detailed information. Printed in USA. SCX63222/07R1



Distributed by: