

e-STUDIO™ 2500c/3500c/3510c

Created for  
BUSINESS,  
focused on  
**COLOR**

WINNER of **8**  
MAJOR INDUSTRY  
AWARDS



**TOSHIBA**  
Leading Innovation >>>





Where Text and Color

# CONVERGE

Which would you prefer: Professional color or unrivaled text and images? Why not both?

The e-STUDIO2500c/3500c/3510c multifunction print/copy/scan/fax (MFP) devices utilize a state-of-the-art, printer-centric engine developed exclusively by Toshiba's imaging experts. The result is a full-color workhorse that's perfect for users who demand unparalleled business productivity, full-color scanning, and razor-sharp printing.

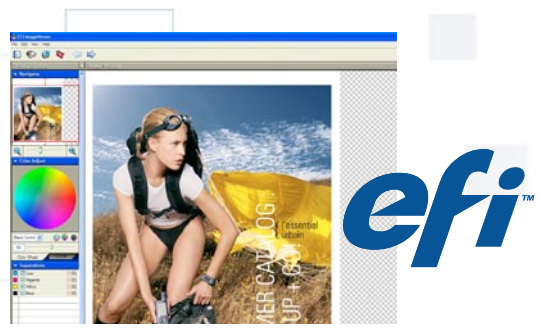
## You Win Some, You Win Some More

It's true that all color copiers provide black and white capabilities. But not all color copiers offer the kind of crisp, detailed black and white that you need for a sophisticated, professional finish. Fortunately, with the optional EFI controller, the e-STUDIO2500c/3500c/3510c offer powerful color management controls, variable data printing, and graphic arts options that are a must for demanding business or graphics environments.

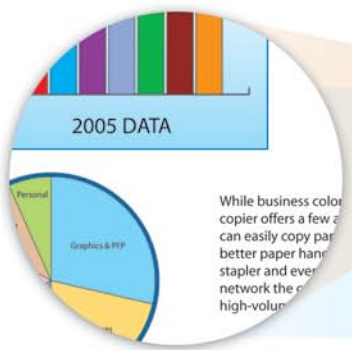
## Sharper Images, Unrivaled Quality

The overall color superiority is supported by several new Toshiba technologies that provide superior registration. The e-STUDIO2500c/3500c/3510c are designed to support Toshiba's proprietary toner, which offers smoother reproduction of photos and halftones, and excellent color fidelity and quality. In addition, these devices boast a breakthrough feature that enables them to create sharp, accurate text and vibrant, professional-quality color reproduction.

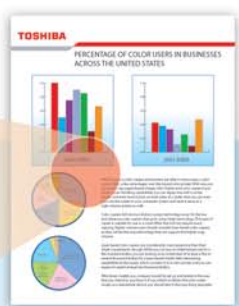




**Watch your productivity skyrocket with the optional EFI Fiery System 8e Controller**  
 For outstanding performance, seamless network integration, and unrivaled color quality in a variety of print environments, count on the Fiery System 8e Embedded Controller as a powerful document workflow solution for any task.



While business color copier offers a few advantages, it can easily copy paper, better paper handling, stapler and even network the copier for high-volume...



# e-BRIDGE

**All-in-one Single Board Architecture**  
 Unparalleled image quality and performance are direct benefits of Toshiba's proprietary, on-board 8-bit controller. The controller features 1 GB max memory and an 80 GB serial ATA hard disk.

## High-Precision Micro-Discrimination

The e-STUDIO2500c/3500c/3510c automatically distinguish between text, graphics, and line art on the same page. The result is rich image and color reproduction with true blacks and deep colors.



## Innovative Toshiba Toner

See the difference with our new low-temperature fuser color toner that offers smoother reproduction of photos and halftones, with excellent color fidelity.

When it's time to get down to business Looking for business-building innovation? First on the list of new developments is an all-in-one, net-ready architecture, providing the most cost-effective color copying, printing, and scanning capabilities available today. Ready to go, right out of the box, the multifunction devices deliver standard network or optional wireless connectivity so that you can put them anywhere in your workgroup. They're also amazingly easy to use.



**It's All About Control**  
 The full-color VGA control panel is not only a thing of beauty, it balances intuitive control with an inviting interface. In the end, you'll get more done, more quickly.

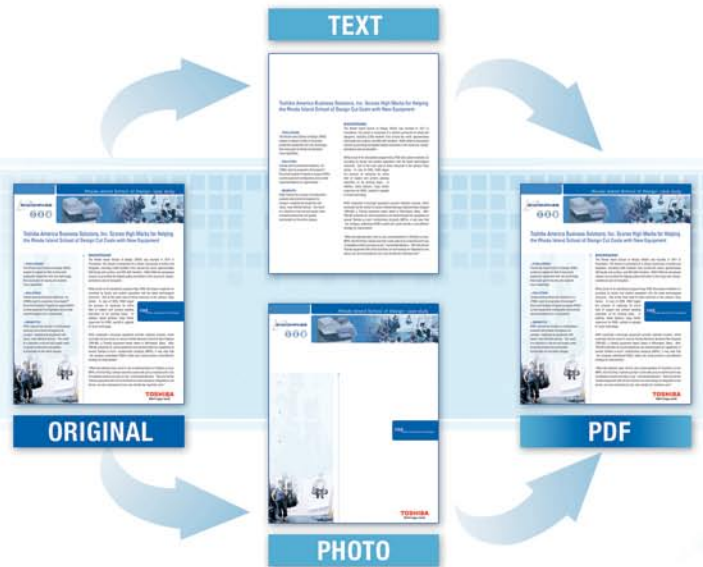


**Stay Productive**

The e-STUDIO2500c/3500c/3510c feature an ergonomically designed control panel that makes even the most complex task a snap. Timesaving templates make routine jobs as easy as walking up and pushing a button. Big print jobs are further simplified by a tilting VGA color control panel that features large, easy-to-read text as well as an interactive copier diagram that displays all functions from paper configuration to copier status.

**One For All, All For One**

For more flexibility, the e-STUDIO2500c/3500c/3510c are network, print, and scan ready, right out of the box. Each device comes complete with Toshiba's second generation e-BRIDGE platform, allowing them to print and scan, print and fax, even copy and scan – all at the same time. This unified design shares system resources to control multiple functions simultaneously.

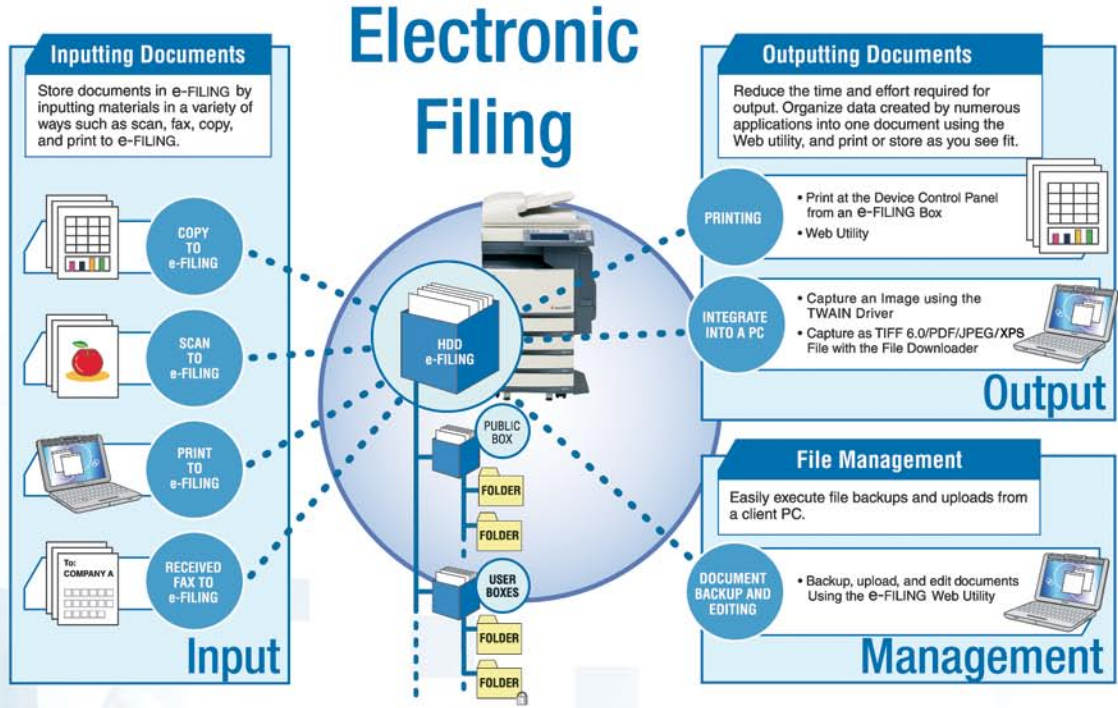


**Large PDFs? No Problem!**  
 Toshiba's Slim PDF feature shrinks file sizes for faster network throughput while maintaining graphics image quality.





**Simplified Document Storage And Retrieval** ▶  
 Toshiba's proprietary e-FILING feature makes it easy to store frequently used documents for simplified retrieval and printing as well as data distribution to multiple destinations.



## Flexible Paper Capacity

Sure, the e-STUDIO2500c/3500c/3510c can handle color, but what about paper? These devices come standard with two 550-sheet universal cassettes and a 100-sheet bypass tray. You also have the option of adding two additional 550-sheet cassettes, or a 2,500-sheet tandem large-capacity feeder for a maximum paper capacity of 3,700 sheets, from up to five different paper sources.

## USB Flash Drive Compatibility



The easily accessible USB port lets you print from or scan to your USB Flash Drive.

## eCopy ScanStation OP V3.0

Leverage flexible, rapid solutions for paper-to-digital business integration. eCopy ScanStation OP document imaging and distribution software transforms your e-STUDIO device into a full-featured information hub. It integrates hardcopy documents directly into the workflow of critical business processes—reporting, administration, document management, financials, human resources, and customer management. Additionally, easy-to-use administration tools let you manage multiple devices from one central location.

## e-BRIDGE Re-Rite

Convert scanned documents into all popular file formats with the touch of a button. Instant Optical Character Recognition (OCR) file format transforms hardcopy text and graphic documents into easily editable file formats including .doc, .html, .pdf, and more. This innovative technology automatically performs OCR and file conversions. Converted images can then be sent to network drives, Email, or both.

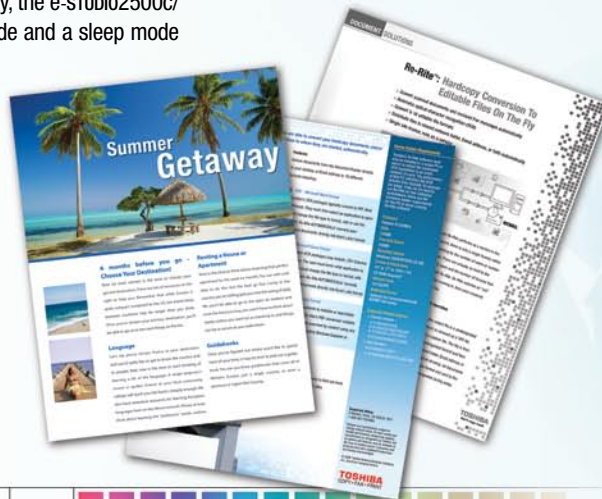
## Good For You, Good For The Earth

Toshiba is committed to making the world a better place by scaling down the use of chemicals that are harmful to the environment. Which is why approximately 50% of the base materials of our printed circuit boards contain no halogen, and more than 70% of the printed circuit board is constructed using lead-free solder. Additionally, the e-STUDIO2500c/3500c/3510c are Energy Star compliant and offer energy saver mode and a sleep mode to reduce power consumption when not in use.



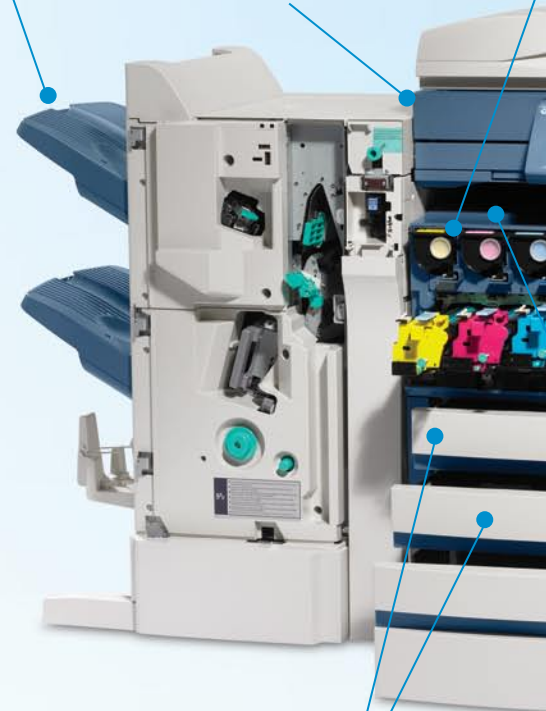
## The Laminated Paper That Doesn't Need To Be Laminated.

Print directly on Toshiba's revolutionary new laser paper for the look and feel of a laminated sheet. Produce magnificent color prints that are extremely durable. AquaAce prints resist water, smudging, and fading—even in harsh weather and direct sunlight.



Professional document finishing, including stapling, hole punch, and saddle-stitch

Standard hard-disk AES encryption for added data security



Automatic Duplex supports 140 lb. index paper from the top two cassettes



## Heightened Security

Along with productivity and performance, today's businesses are becoming more and more concerned about security. The e-STUDIO2500c/3500c/3510c offer 128-bit data encryption as a standard feature – ensuring that vital data remains protected by employing the next-generation Advanced Encryption Standard (AES). Additional security features include secure PDF scanning, IPv6 support and an optional Data Overwrite Kit.

Easily Replaceable Units (ERU) design saves money on service costs and maximizes uptime

Set permissions for color printing and copying either by department or individually to track and manage costs

Print from and scan to USB Flash Drive

Tilting, color, half VGA control panel is 508 compliant and increases visibility, making the devices easier to use and access

A Stackless Automatic Duplexing Unit (ADU) comes standard, helping to reduce paper costs by easily handling two-sided originals

Bypass Tray handles up to 100 lb. cover

Single-pass, intermediate transfer belt

The devices can handle up to 3,700 sheets of paper from up to five sources

A compact design with inner space exit tray saves valuable space

## Copy Features

- > Single-pass, four-drum, tandem color engine
- > Print speeds up to 45 PPM for B&W, and 35 PPM for color
- > 600 x 600 dpi resolution
- > FCOT: 6.5 Seconds for black (5.2 for e-STUDIO3510c), 8.6 Seconds for color
- > 99 second warm-up time
- > Preventive Maintenance 50K/70K
- > Color image quality optimized for general office and professional graphics
- > 508 compliant, tilting color control panel
- > Environmentally friendly, Energy Star compliant
- > ERU: Easily Replaceable Units

## Printer Features

- > PS3, PCL6
- > 10/100BaseT Ethernet interface
- > IEEE 802.11b/g wireless printing
- > Point & Print
- > Private, proof, scheduled, and stored print
- > New Unified Toshiba Print Driver
- > Windows Vista Premium (XPS)
- > Print from USB memory (supports most common USB drives)

## Fax Features

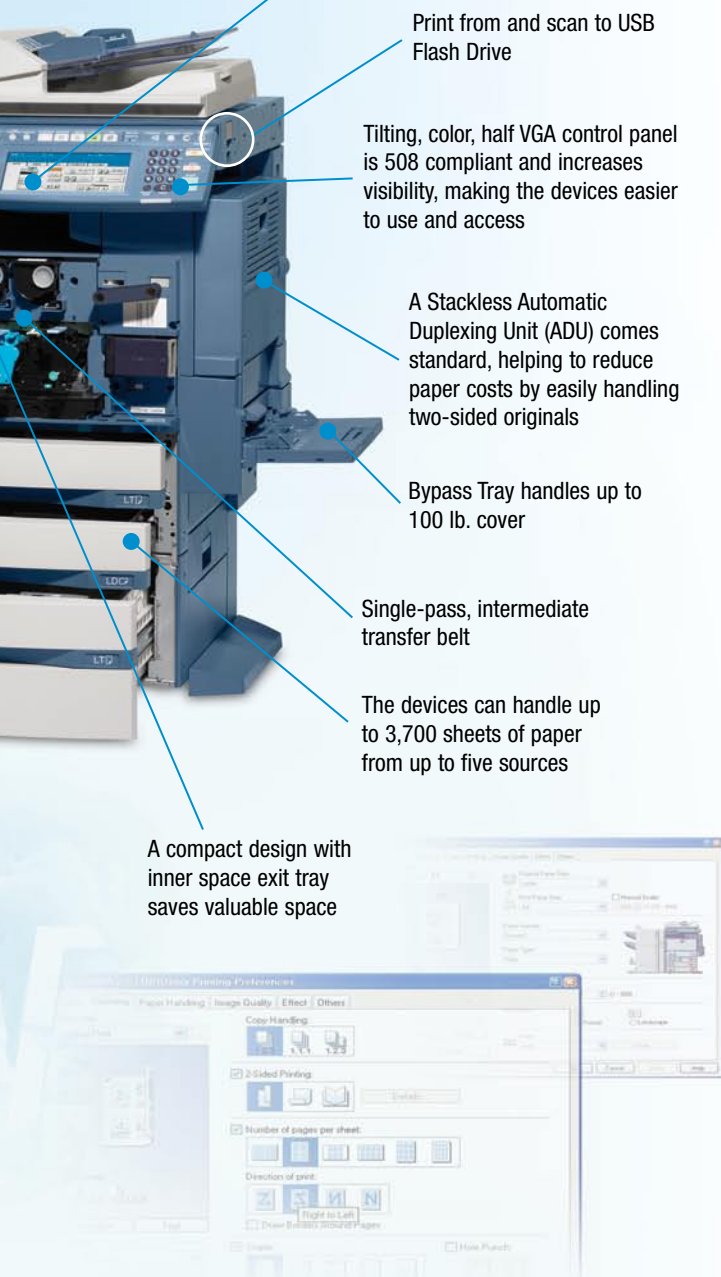
- > Super Group 3, 33.6 Kbps
- > JBIG compression
- > Optional second line
- > Internet Faxing (T.37)
- > Incoming fax routing: Send-to-File/-Email/-Internet

## Scan Features

- > Scan speeds up to 50 black SPM and 40 SPM color
- > 600 dpi B&W and color resolution
- > JPEG, TIFF and PDF file formats
- > Scan-to-File/-Email/-FTP
- > Control panel LDAP support
- > Unified Address Book
- > Scan to USB Flash Drive (supports most common USB drives)

## EFI Fiery® Controller GA1210 Features

- > Memory (RAM) 256 MB (Standard), 1 GB (Maximum)
- > Hard Disk 80 GB or larger
- > Printing resolution (B&W and Color) 600 x 600 dpi
- > Gradation 256 steps
- > Windows 2000, XP
- > Network Interface 10BaseT, 1000BaseTX, (RJ45)
- > Network Protocol TCP/IP, IPX/SPX, AppleTalk®
- > PDL Adobe® PostScript® 3™, PCL6c®
- > EFI Fiery Driver
- > Command WorkStation
- > EFI Fiery WebTools™
- > Fiery ColorWise®
- > Fiery FreeForm™
- > EFI Graphic Arts Package



# e-STUDIO™ 2500c/3500c/3510c

## SPECIFICATIONS

The Toshiba e-STUDIO2500c, e-STUDIO3500c and e-STUDIO3510c are powerful, multifunction color copiers that combine the performance of a multifunction system with the quality of a professional graphics solution. Outstanding speed, performance, and professional-quality color as well as detailed text and graphics can be yours – everyday, all the time. Thanks to Toshiba proprietary print technology, the e-STUDIO2500c/3500c/3510c devices are the ideal, cost-effective graphic/business solution for even the busiest office and pay-for-print environments.

### Multifunction COLOR



Full color output is produced at 25/35/35 PPM, with 35/35/45 PPM for black and white.



For the ultimate in flexibility — Print and scan, print and fax, even copy and scan — all at the same time.



Network Administration, 1,000 department codes and 10,000 user codes along with other security features.

### SPECIFICATIONS

<b>Copying Process</b>	4-Drum Electrostatic Photographic Transfer System with Internal Transfer Belt
<b>Copying Type</b>	4-Beam Color Laser (8 bit)
<b>Copy/Print Resolution</b>	600 x 600 dpi (2400 x 600 dpi B&W equivalent)
<b>Copy/Print Speed</b>	e-STUDIO2500c – 25 PPM Color / 35 PPM B&W e-STUDIO3500c – 35 PPM Color / 35 PPM B&W e-STUDIO3510c – 35 PPM Color / 45 PPM B&W
<b>Warm-Up Time</b>	Approx. 99 Seconds
<b>First Copy Out Time</b>	e-STUDIO2500c – 8.6 Seconds Color / 6.5 Seconds B&W e-STUDIO3500c – 8.6 Seconds Color / 6.5 Seconds B&W e-STUDIO3510c – 8.6 Seconds Color / 5.2 Seconds B&W
<b>Duty Cycle</b>	50,000/70,000/70,000 Copies
<b>Multiple Copying</b>	Up to 999 Copies
<b>Acceptable Paper Size and Weight</b>	Cassette: ST-R to LD (17 lbs. Bond - 140 lbs. Index)* Bypass: ST-R to 12" x 18" (17 lbs. Bond - 100 lbs. Cover)* PPF: (17 lbs. Bond - 90 lbs. Index) LCF: LT (17 lbs. - 28 lbs. Bond)
<b>Memory (Min/Max)</b>	Main Memory: 512 MB / 1 GB Page Memory: 256 MB / 512 MB HD: 80+ GB
<b>Reduction/Enlargement</b>	25% to 400%
<b>Bypass</b>	100-Sheet "Smart" Bypass (17 lbs. Bond - 100 lbs. Cover)*
<b>Control Panel</b>	Color Half VGA Tilttable LCD Touch Panel
<b>Paper Supply</b>	Up to 3,700-Sheet Input Capacity Standard: 2 x 550-Sheet Cassettes 100-Sheet Bypass Optional: 1 x 550-Sheet PPF, 1 x 550-Sheet Cassette 1 x 2,500-Sheet LCF
<b>Duplex</b>	Standard Trayless Automatic Duplex Unit (17 lbs. Bond - 140 lbs. Index)*
<b>Dimensions</b>	Approx. 26" x 28" x 29" (W x D x H)
<b>Weight</b>	Approx. 265 lbs.
<b>Minimum Footprint Requirement</b>	39.53" x 28.31" (W x D)
<b>PM Cycle</b>	50,000/70,000/70,000
<b>Drum Type/Yield</b>	Organic Photoconductor: 50,000/70,000/70,000
<b>CMYK Toner Yield</b>	CMY: 21,000 / K: 24,000
<b>Black Developer Yield</b>	50,000/70,000/70,000
<b>Power Supply</b>	115 V, 15 Amps
<b>Power Consumption</b>	Maximum 1.5 kW

### PRINT SPECIFICATIONS

<b>PDL Support</b>	PCL6 & PostScript 3
<b>Operating Systems</b>	Netware 4.x, 5.x, 6.x, Windows 2000/XP, Windows Server 2003, Citrix MetaFrame, Macintosh, Linux, UNIX
<b>Protocol Support</b>	IPX/SPX, TCP/IP, Ethertalk, AppleTalk, NetBIOS Over TCP/IP LPR/LPD, IPP, SMB, SNMP, Netware, Port 9100, Bluetooth (HCRP)
<b>Drivers</b>	Windows 2000, Server 2003, XP Macintosh OS 8.6, 9.x, 10.1/10.2/10.3, UNIX, AS400 via iData & Port 9100, SAP R/3
<b>Connectivity</b>	10BaseT/100BaseTX Ethernet, 802.11b/g Wireless LAN, USB, Bluetooth (HCRP)
<b>Device Management</b>	TopAccess, Web Jetadmin
<b>Certification</b>	WHQL, Novell

Corporate Office: 2 Musick, Irvine, CA 92618-1631 / Tel: 949/462-6000

East Coast: 959 Route 46 East, 5th Floor, Parsippany, NJ 07054 / Tel: 973/316-2700 Fax: 973/263-2393

Midwest: 8770 W. Bryn Mawr Ave., Suite 700, Chicago IL 60631 / Tel: 773/380-6000 Fax: 773/380-8077

South: 4855 Peachtree Industrial Blvd., Suite 210, Norcross, GA 30092 / Tel: 770/209-8540 Fax: 770/209-8556

West Coast: 142 Technology, Suite 150, Irvine, CA 92618 / Tel: 949/462-6262 Fax: 949/462-2700

Web Site: www.copiers.toshiba.com

©2007 Toshiba America Business Solutions, Inc., Electronic Imaging Division  
e-STUDIO2500c/3500c/3510c Brochure/Inv. Code ES2500C3500C3510C1

### SCAN SPECIFICATIONS

<b>Scan Resolution</b>	150 dpi, 200 dpi, 300 dpi, 400 dpi, 600 dpi
<b>Scan Speed</b>	40 SPM Color / 50 SPM B&W
<b>File Format</b>	TIFF, PDF, JPEG, XPS
<b>Authentication</b>	LDAP, SMTP, Windows Domain

### FACSIMILE SPECIFICATIONS

<b>Compatibility</b>	Super G3
<b>Data Compression</b>	MH/MR/MMR/JBIG
<b>Transmission Speed</b>	Approx. 3 Seconds Per Page
<b>Fax Modem Speed</b>	33.6 Kbps
<b>Fax Memory</b>	240 MB Transmission, 120 MB Reception
<b>Memory Transmission</b>	100 Jobs, 1,000 Destinations Max. 400 Destinations/Job
<b>Scan Speed</b>	.7 Seconds Per Page, 50 SPM

### e-FILING SPECIFICATIONS

<b>Operation Method</b>	Color Touch Screen Control Panel or Client PC
<b>Number of Boxes</b>	1 Public Box, 200 Private User Boxes
<b>Capacity of Boxes</b>	100 Folders Per Box, 400 Documents Per Folder 200 Pages Per Document

### OPTIONS

<b>MR3018 RADF</b>	100 Sheets
<b>KD1018 Paper Feed Pedestal</b>	550-Sheet Pedestal, Statement-R to Ledger
<b>MY1031 Cassette Module</b>	550-Sheet Drawer, Statement-R to Ledger
<b>KD1019 Large Capacity Feeder (LCF)</b>	2,500-Sheet Drawer, Letter
<b>MJ1101 Multi-Position Finisher</b>	Stationary Tray: 250 Sheets (Lt) Tray 1 Stack Capacity: 2,000 Sheets (Lt) Staple Capacity: 50 Sheets
<b>MJ1030 Saddle-Stitch Finisher</b>	Tray 1 Stack Capacity: 1,000 Sheets (Lt) Tray 2 Stack Capacity: 1,000 Sheets (Lt) Staple Capacity: 50 Sheets
<b>MJ6101 Hole Punch Unit</b>	(for MJ1101) 2- or 3-Hole Punch Capability
<b>MJ6004 Hole Punch Unit</b>	(for MJ1030) 2- or 3-Hole Punch Capability
<b>KN3500 Bridge Kit</b>	Required with MJ1101, MJ1030
<b>GA1210 EFI Controller*</b>	
<b>GD1210 Fax Board</b>	
<b>GD1160 2nd Line Fax</b>	
<b>GN1041 Wireless LAN Adapter</b>	
<b>GN2010 Bluetooth Adapter</b>	
<b>GN3010 Wireless Antenna</b>	
<b>GP1060 Data Overwrite Kit</b>	
<b>GC1250 Main Expansion Memory</b>	
<b>GC1260 Page Expansion Memory</b>	



\* GA1210 controllers support up to 90 lbs. index from the cassettes and 140 lbs. index from the bypass.

Designs and specifications subject to change without notice. For best results and reliable performance, always use supplies manufactured or designated by Toshiba. Not all options and accessories may be available at the time of product launch. Please contact a local Authorized Toshiba Dealership for availability. Toner yields are estimates, based on 6% coverage, letter-size page. Driver and connectivity feature support varies by client/network operating system.



**TOSHIBA**  
Leading Innovation >>>